



VGA2788

USB3.0 to HDMI Graphics Adapter



Introduction

SuperSpeed USB3.0 interface is the next revolution in I/O interconnect standards that will deliver the bandwidth and features required by PCs, consumer electronics and communications devices. With 10 times faster throughput than USB 2.0 standard, USB3.0 Graphic adapter enhances better VGA performance effect and reduce CPU loading substantially.

SUNIX VGA2788 Super-Speed USB3.0 Graphics Adapter provides a unique solution to add extra displays to a computer without using traditional graphics card. Users can instantly mirror or extend a desktop onto another display via standard HDMI, such as LCD, CRT, projector and plasma displays. Besides, user can experience 1080P resolution and stereo audio output abilities over HDMI connectivity for home entertainment application. With USB interface plug-n-play and bus power feature, this product brings multi-monitor applications into the mainstream.

Features

- Add-on monitor, LCD or projector through USB3.0 or USB2.0 connectivity.
- Supports widescreen aspect ratio of 16:9 Full HD 1080P video streaming.
- High performance USB Graphics Engine supports resolutions up to 2048 x 1152 @ 32bit.
- Compliant with HDMI Ver 1.2 and backward and compatible to DVI Ver. 1.0 Specification
- Low power consumption via USB Bus power supply (without Heat Sink).
- Supports desktop display mirror, extend mode, multi screen mode and screen rotation mode
- Up to six USB3.0 graphic adapters to work simultaneously.
- Automatic recognition of monitor type, resolution, and features.
- Hot-swapping / Plug-n-Play of monitors without reconfiguration.
- Movement of windows on the desktop is smooth, with no trail or shuddering.
- Compatible with Windows power management hibernate and suspend modes.
- Specialized for office using, home entertainment, and video playing.
- Supports Microsoft Windows operation system.
- Certified by CE, FCC, and RoHS approval.



Specification

Video Interface : HDMI Ver1.2

Bus Interface: USB3.0 (Back compatible with USB2.0)

Connector:

HDMI type A receptacle connector

Host upstream link:

USB3.0 Micro B Type Female Connector



(HDMI)



(USB3.0 Micro B)



USB3.0 Host



USB2.0 Host

Memory: 16 MB DDR Synchronous DRAM (SDRAM)

Power Consumption: + 5VDC / 400mA over USB bus power

Support Mode: Extend mode, Mirror mode, Multi Screen mode, Screen Rotation mode

• **Extend Mode**



• **Mirror Mode**



• **Multi Screen Mode**



• This Mode needs more than one USB3.0 Graphics Adapters Using simultaneously. (Maximum 6 adapters connect to 6 displays)

• **Screen Rotation Mode**



Normal

90°

180°

270°



Resolutions :

640x480, 800x600, 1024x768, 1152x864, 1280x720,
1280x768, 1280x800, 1280x960, 1280x1024, 1360x768,
1400x1050, 1440x900, 1600x1200, 1680x1050,
1920x1080, 1920x1200, 2048x1152



Regulatory Approvals: FCC Part 15 Class B, CE (EN55022, EN61000, EN55024) ,
VCCI, C-Tick, BSMI, and RoHS

O.S. Support : Windows XP/Vista/7 (X86/X64)

Environment : Operation temp. 10 °C ~ 40 °C (50-104°F)
Relative humidity: < 85% non-condensing
Storage temp. -10 °C ~ 85 °C (14~176°F)



Dimension: 56 (W) x 87(L) x 22(H) mm

Case Material: ABS

Weight: 50g±5g

USB Cable: USB3.0 A -Type Male to USB3.0 Micro B-Type Male

Application

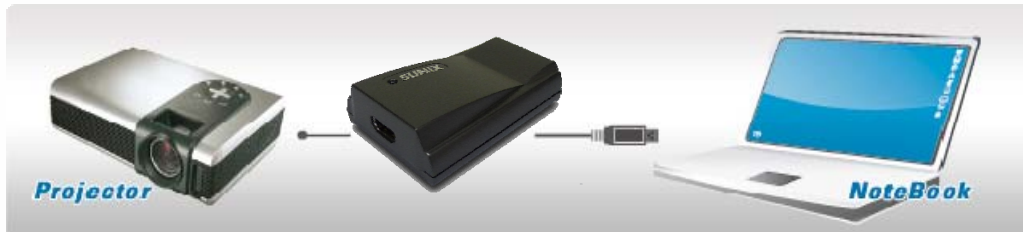


- Video & Audio Output via HDMI





Application



- Play game with strategy guide



- See and work with multiple documents at the same time – increase productivity



- Coding & testing



- Monitor stock & market news

Note: SUNIX recommends USB3.0 Graphics Adapter working over SuperSpeed USB3.0 connectivity to get best performance. But it's also backward compatible with High Speed USB2.0 environment.

Package Contents

1. USB Graphics Adapter
2. Driver CD ROM
3. Quick Installation Guide
4. USB3.0 cable 600mm (2.0 ft.)

