

ZeoLink.tv – Mobile TV Entertainment on the Go!

ZeoLink.tv is a H.264 based mobile IPTV solution that provides a whole new TV watching experience. Utilizing ubiquitous cloud computing architecture, ZeoLink.tv allows users to watch home TV programs anytime, anywhere. Simply setup a set-top box at home and install ZeoLink.tv on your smartphone, you are ready to go. You could also use the TV program guide (EPG, Electronic Program Guide) and TV previews for easy channel selection; select from your most played channels to maintain your favorite watch list for quick access. With ZeoLink.tv, you will never miss out any of your favorite TV program again!



User Benefits

Miss No TV Shows Anymore!

When equipped with ZeoLink.tv, you have all your home channels with you. Whenever you are on the go or unable to get home on time for the important sports games, TV finales, latest news or financial analysis, you could always activate ZeoLink.tv with only one click to watch.

watched shows. Simply select any of your channels from the list of our “Most Watched” summary and put them into your favorite list, you are able to select your own favorite channel by single click access.

As Many Channels As at Home

Tired of internet TV but with limited channels or unwanted programs? Not anymore. With ZeoLink, the channels you subscribe at home are the same channels you can watch on the go.



Latest TV Guide Provided

Don't know when your favorite show is aired? Just browse through our EPG (Electronic Program Guide) to find out the brief of every TV show, scheduled programs or preview of the current show.

ZeoLink.tv provides rich TV watching experience for people on the go.

Customizable Favorite List

The “Favorite List” allow you to keep track of your most

Function List

- Complete channels list
- Audio volume control
- Electric program guide
- EPG renew control
- EPG source control
- Favorite list
- Most played list
- TV video/audio quality control
- Video/Audio H.264 streaming control
- Channel selection shortcut
- User account control
- Dynamic channel preview control

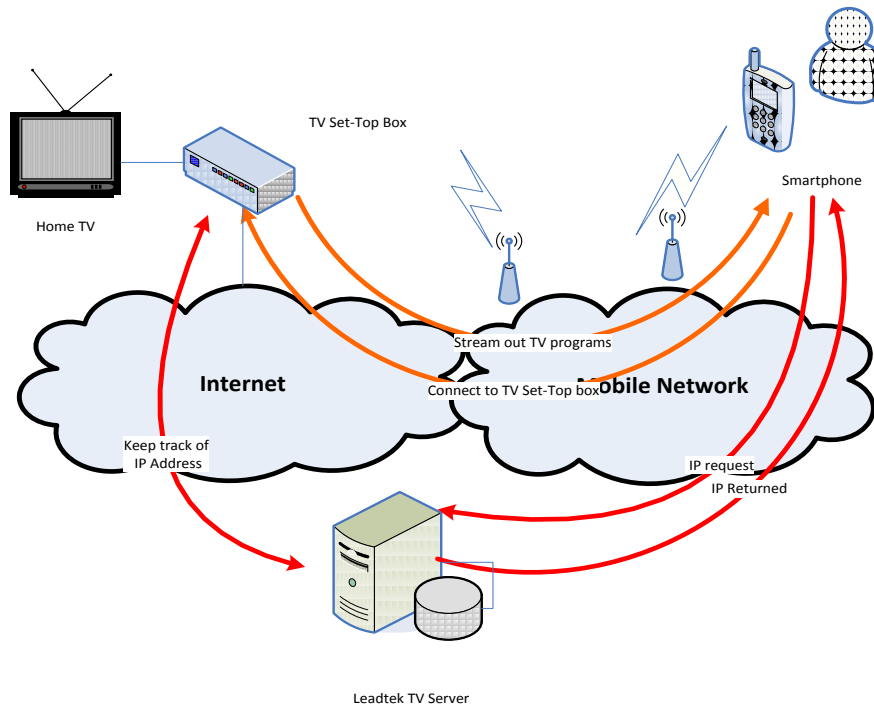
Software Specification

Player Specification	Options	Default Setting
Display Quality	CIF 352 x 288 QVGA 320 x 240 QCIF 176 x 144	QVGA
Variable Bit Rate	512 kbps 256 kbps 128 kbps	256 kbps
Variable Frame Rate	Full Speed/30 fps (Frames per second) Half Speed/15 fps 1/3 Speed/10 fps	Half Speed (15 fps)
Audio Type	Mono Stereo	Mono
Audio Quality	Mono (20, 25, 30, 35, 40 kbps) Stereo (40, 50, 60, 70, 80, 90 kbps)	20 kbps
Preview Type	Dynamic Static None	None
UI Type	Simplified Functional	Simplified
Authentication	Account/Password	

Leadtek Research, Inc.

18F 166 Chien-Yi Rd., Chung Ho City, Taipei County 23511, Taiwan
 Tel : +886-2-8226-5800 Fax : +886-2-8226-5801
 Web : www.zeolink.net email : service@leadtek.com
 Fan club : www.facebook.com/zeolink

Architecture



How Does It Work

- User request for connection from ZeoLink.tv to TV Set-Top box
- Leadtek TV server checks for TV Set-Top box IP and return to user
- User connects back to TV Set-Top box for streaming out request
- User start watching TV on ZeoLink.tv

Screen Shots



Program guide are provided for your convenience.



Use favorite list to save your preferred channels.

Leadtek Research, Inc.

18F 166 Chien-Yi Rd., Chung Ho City, Taipei County 23511, Taiwan
 Tel : +886-2-8226-5800 Fax : +886-2-8226-5801
 Web : www.zeoLink.net email : service@leadtek.com
 Fan club : www.facebook.com/zeoLink