

AMOS Series

NEW

VIA

AMOS-3000

Ultra Compact Fanless
Embedded System for Pico-
ITX EPIA-P700 Embedded
Board



Features

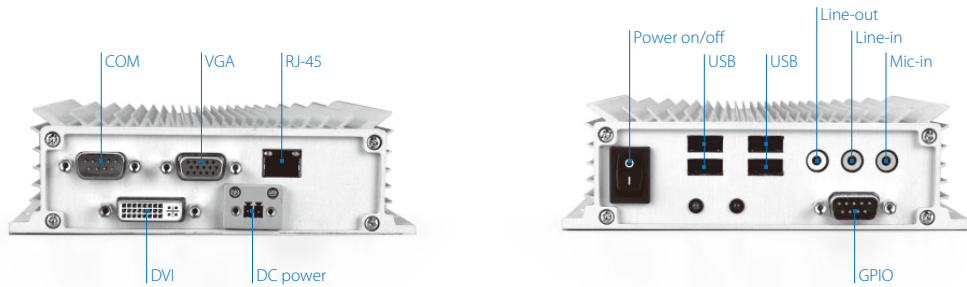
- A fanless, ultra compact embedded chassis supporting EPIA-P700 embedded board
- Slim size with stylish ID and full sealed of aluminum design and few mechanical parts
- Additional extension sub-system chassis for 2.5" SATA hard drive storage chassis
- Optimized integration with front and rear I/O access
- Supports dual independent display
- Supports Gigabit Ethernet and WiFi networking options
- Embedded OS Ready platform
- Multiple mounting solutions: Wall / Table / VESA mountable
- Fanless design for space and environment critical applications
- Compatible sub-system chassis: AMOS-3501

Specifications

Part Number		AMOS-3000-1C10A1	AMOS-3000-1E05A1
Processor System	Processor	1.0GHz VIA C7®	500 MHz VIA Eden™ ULV™
	Chipset	VIA VX700 Unified Digital Media IGP chipset	
	BIOS	Award BIOS 4/8 Mbit flash ROM	
	System Memory	1x DDR2 533, 200-pin SDRAM SODIMM socket Up to 1 GB memory size	
Display	VGA	Integrated VIA UniChrome™ Pro II 3D/2D AGP graphics with MPEG-2/4 and WMV9 decoding acceleration	
	Display Memory	Optimized Unified Memory Architecture (UMA) Supports up to 128 MB frame buffer using system memory	
	Display Interface	Supports CRT and DVI-D interface	
LAN	Controller	1 x VIA VT6122 Gigabit Ethernet controller	
	Interface	1 x RJ45 connector	
System Board Support	Compatibility	Compatible with EPIA-P700 embedded boards (EPIA-P700-10L , EPIA-P700-05LE)	
Drive Bay	DOM Flash Drive	Driver bay for 44-pin IDE interface Disk On Module (DOM) Flash drive	
Storage Expansion (AMOS-3501)	HDD bay	Optional AMOS-3501 storage sub-system expansion chassis, supporting a 2.5" SATA hard disk drive bay	
Cooling System	Heatsink	Built-in heatsink and heatpie set	
HD Audio	Controller	VIA VT1708A High Definition Audio Codec	
	Interface	Support Line-in, Line-out, Mic-in	
Others	Watchdog Timer	System reset. Programmable 1 ~ 255 sec	
	Serial Ports	Built-in EPIA-P700 system board . VIA Super I/O LITE VT1212 controller, supporting one COM port	
	USB	4 x USB 2.0 ports	
	GPIO	1 of 2x6-pin headers supports 8-bit GPIO + 5V power source	
Chassis Construction	Construction	Aluminum top cover mixed with copper heatpie. Metal chassis housing	
	Material	Aluminum top cover and SECC front/rear/bottom plate	
Front I/O Ports	Audio Line-in	1 x Front-access Line-In port by a 3.5 Ø audio jack connector	
	Audio Line-out	1 x Front-access Line-out port by a 3.5 Ø audio jack connector	
	Audio Mic-in	1 x Front-access Mic-in port by a 3.5 Ø audio jack connector	
	USB	4 x Front-access USB ports by two pairs of double-stack of mini-DIN connectors	
	GPIO	1 x Front-access GPIO port by a D-Sub 9-pin female connector	
	Rear I/O Ports	VGA	1 x Rear-access VGA port by a D-Sub 15-pin female connector
	DVI	1 x Rear-access DVI Port by a D-Sub 24-pin female connector metal face plate	
	Giga LAN	1 x Rear-access Gigabit Ethernet port by a RJ-45 connector	
	COM	1 x Rear-access COM port by a D-Sub 9-pin male connector	
Power Supply	Power Source	DC Input 12 V	
	Power Input Connector	DC Power Input connector by 2-pole Phoenix connector	
	Power ON/OFF	One DC Power on/off switch	



System I/O



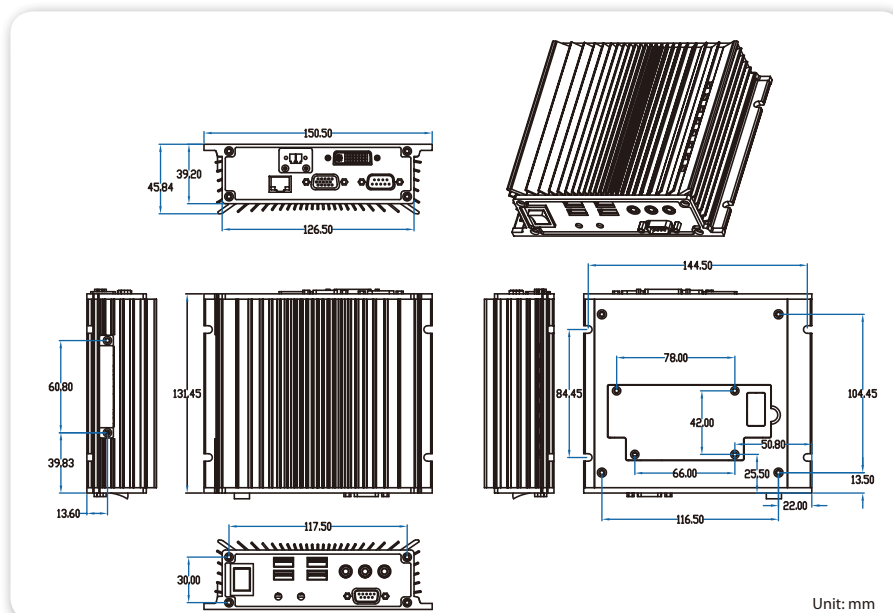
Specifications

Part Number	AMOS-3000-1C10A1	AMOS-3000-1E05A1
Mechanical Specifications	Mounting	Supports table mount, wall mount, and VESA mount(Optional)
	System Indicator	1 x Power on LED (green) 1 x HDD LED (red)
	Weight	Net 1 kg
	Dimension	135 mm (W) x 45 mm (H) x 131 mm (D). Width 150 mm with mounting bracket
Environmental Specification	Operation Temperature	-20°C ~ 60°C
	Relative Humidity	Humidity: 0 ~ 90% @ 45°C, non-condensing
	Storage Temperature	-40°C ~ 85 °C@ 90%, non-condensing
	Vibration Loading During Operation	With DOM Flash Drive 5Grms, IEC 60068-2-64, random, 5 ~ 500Hz, 1 Oct/min, 1hr/axis With Hard Disk Drive,1Grms, IEC 60068-2-64, random, 5 ~ 500Hz, 1 Oct/min, 1hr/axis
	Shock During Operation	With DOM Flash drive 50G, IEC 60068-2-27, half size, 11ms duration With Hard disk drive 20G, IEC 60068-2-27, half size, 11ms duration
	Certification	CE/FCC Class A, UL

Ordering Information

Part Number	Description
AMOS-3000-1C10A1	1.0 GHz C7® Based AMOS-3000 Fanless Ultra Compact Embedded System, with 1 x VGA, 1 x DVI, 1 x GigaLAN, 4 x USB, HD Audio, DC-in 12V
AMOS-3000-1E05A1	500 MHz Eden™ ULV Based AMOS-3000 Fanless Ultra Compact Embedded System, with 1 x VGA, 1 x DVI, 1 x COM, 1 x GigaLAN, 4 x USB, HD Audio, DC-in 12V
AMOS-3501	Storage sub-system chassis for AMOS-3000

Dimensions



* All product specifications are subject to change without notice. Update: February 17, 2009.